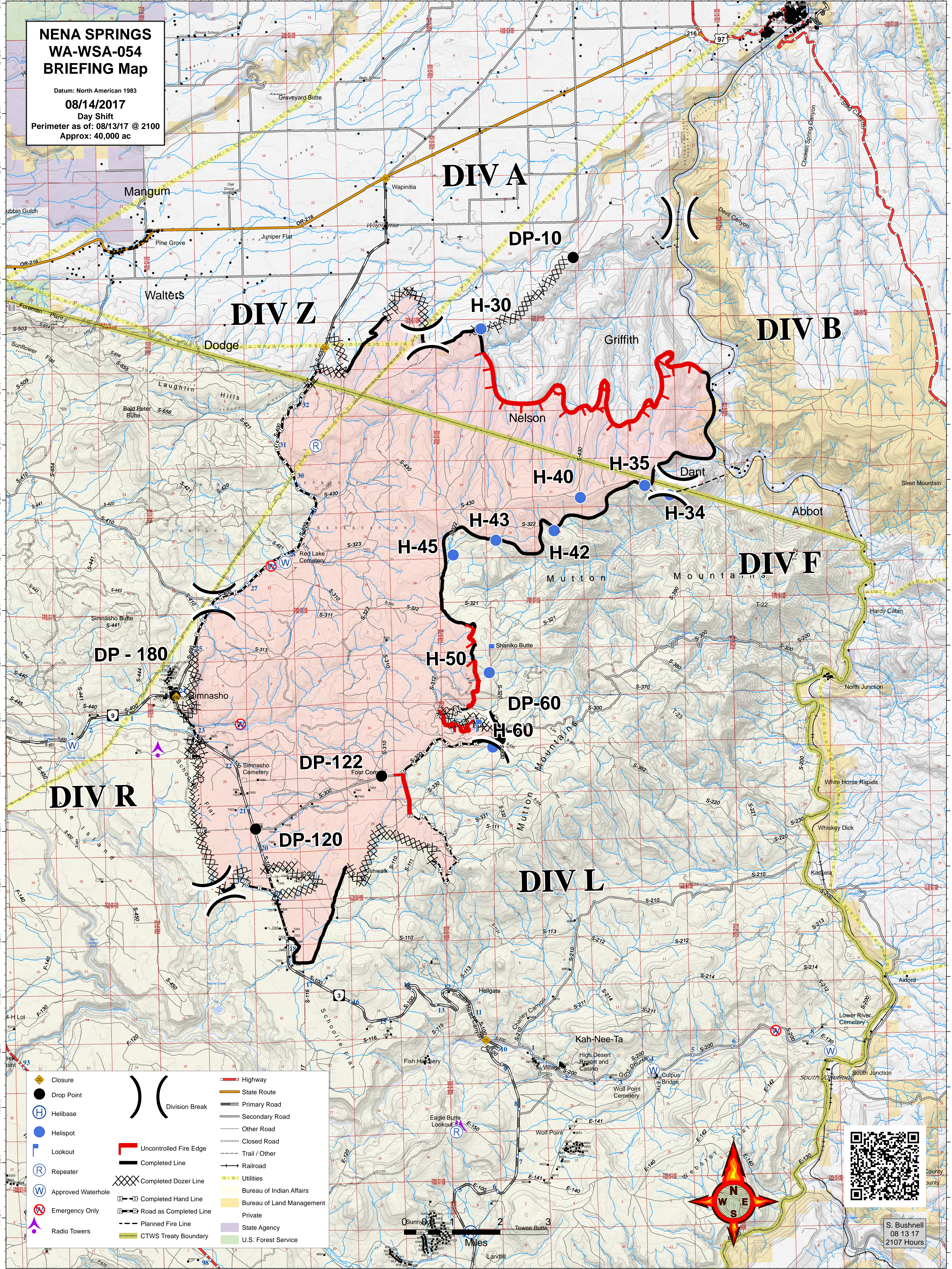


**NEA SPRINGS
WA-WSA-054
BRIEFING Map**

Datum: North American 1983
08/14/2017
 Day Shift
 Perimeter as of: 08/13/17 @ 2100
 Approx: 40,000 ac



- | | |
|------------------------|---------------------------|
| Closure | Highway |
| Drop Point | State Route |
| Helibase | Primary Road |
| Helispot | Secondary Road |
| Lookout | Other Road |
| Repeater | Closed Road |
| Approved Waterhole | Trail / Other |
| Emergency Only | Railroad |
| Radio Towers | Completed Dozer Line |
| Uncontrolled Fire Edge | Completed Hand Line |
| Completed Line | Planned Fire Line |
| Division Break | Utilities |
| Road as Completed Line | Bureau of Indian Affairs |
| CTWS Treaty Boundary | Bureau of Land Management |
| | Private |
| | State Agency |
| | U.S. Forest Service |



S. Bushnell
 08 13 17
 2107 Hours

