



WARM SPRINGS



WALK THROUGH HALLOWEEN VILLAGE

SATURDAY, 10/31 -> 1-3 PM

PI-UME-SHA FIELDS BEHIND
THE WARM SPRINGS COMMUNITY CENTER.
FAMILIES SHOULD PARK AND THEN ENTER
NEAR THE BACK GATE.

FACE MASKS REQUIRED

**SOCIAL DISTANCING
WILL BE OBSERVED**





WARM SPRINGS



- Warm Springs Tribal Buildings will be closed for any trick or treating this year as a Covid-19 precaution.
- Families are asked to plan Halloween activities within their own household and not gather in groups with others.

YOU'RE INVITED

SATURDAY 10/31 1 - 3 PM

TO THE

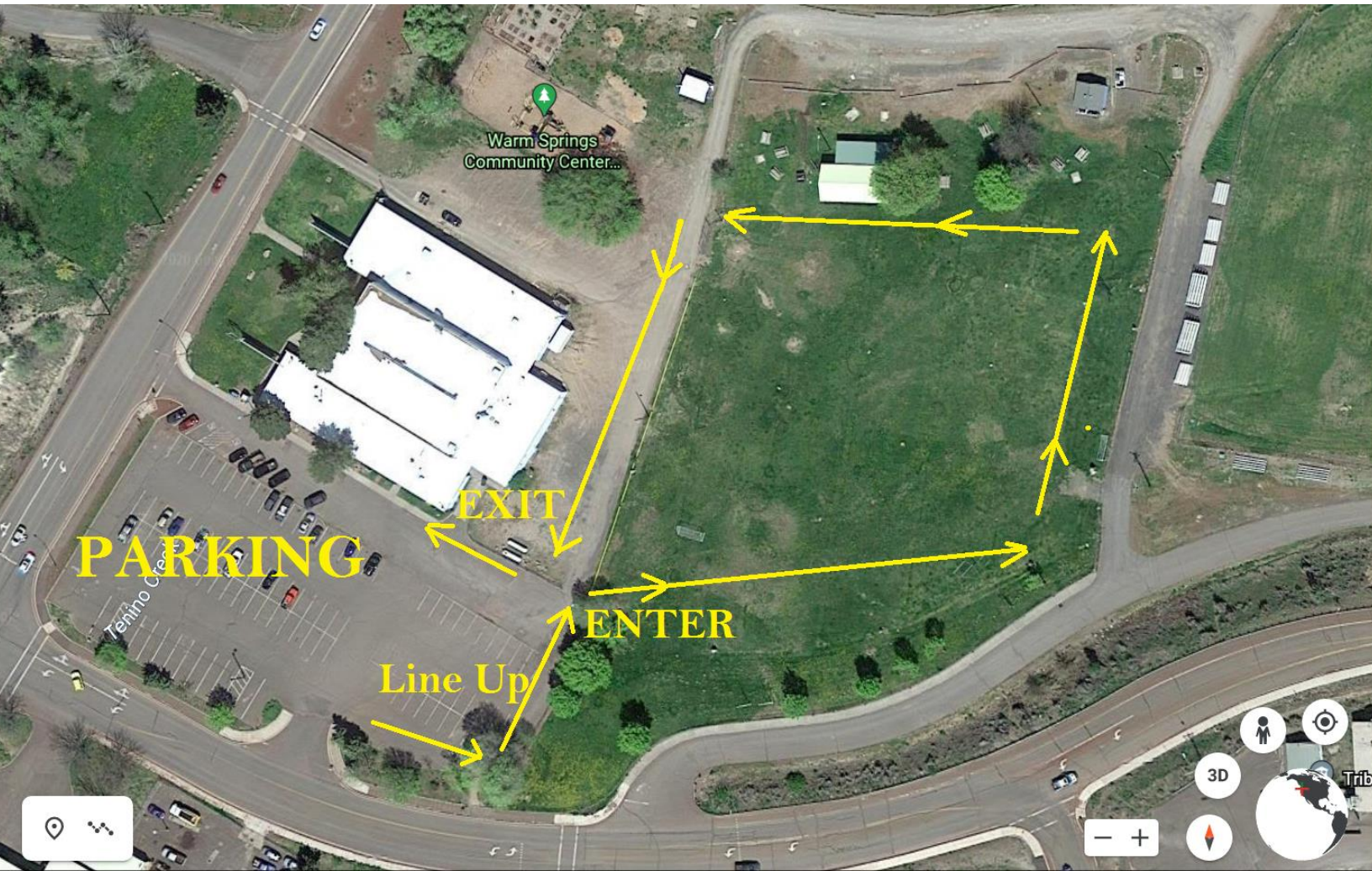
**WALK THROUGH
HALLOWEEN VILLAGE**



Pi-Ume-Sha field behind the Community Center

- Families are invited to park and then line up with social distancing.
- There will be a one way route to decorated stations that will have treats.
- Families must stay with their own group and walk continuously.
- After they have walked thru the event, families must return to their vehicle & leave.
- Face masks are required even under costumes.

**All Covid-19 protocols will be in place for a
FUN & SAFE Family Halloween Walk-Through.**



Warm Springs
Community Center...

PARKING

EXIT

ENTER

Line Up

Tehino Creek

3D

Trib