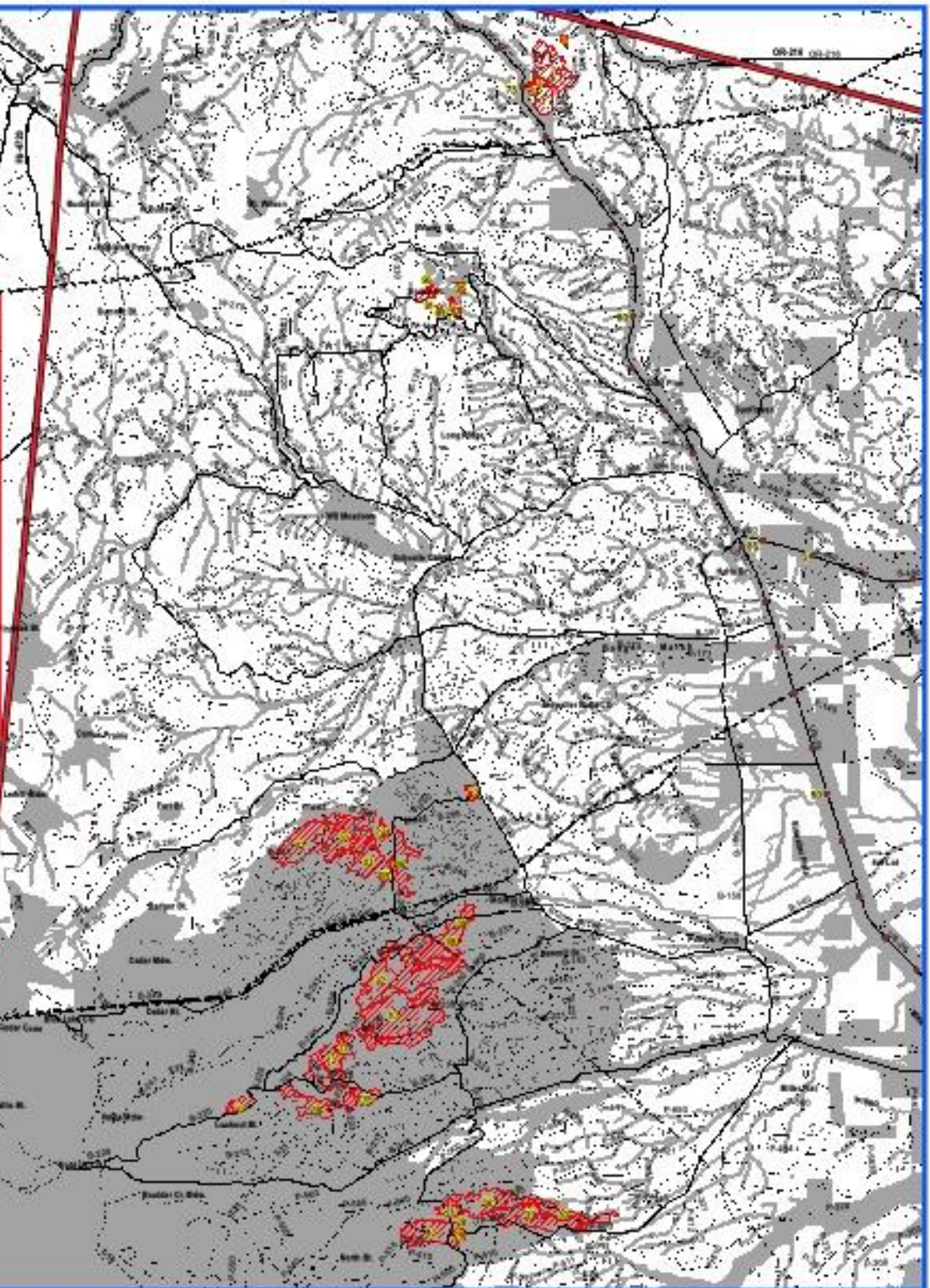


2021 Wood Cutting Map

**Salvage Decks
OPEN
to cut
October 2021**

Salvage Blocks OPEN to cut

SECTION	BLOCK NUMBER	ACRES
SECTION 1	1	5.812
SECTION 2	2	5.812
SECTION 3	3	5.812
SECTION 4	4	5.812
SECTION 5	5	5.812
SECTION 6	6	5.812
SECTION 7	7	5.812
SECTION 8	8	5.812
SECTION 9	9	5.812
SECTION 10	10	5.812
SECTION 11	11	5.812
SECTION 12	12	5.812
SECTION 13	13	5.812
SECTION 14	14	5.812
SECTION 15	15	5.812
SECTION 16	16	5.812
SECTION 17	17	5.812
SECTION 18	18	5.812
SECTION 19	19	5.812
SECTION 20	20	5.812
SECTION 21	21	5.812
SECTION 22	22	5.812
SECTION 23	23	5.812
SECTION 24	24	5.812
SECTION 25	25	5.812
SECTION 26	26	5.812
SECTION 27	27	5.812
SECTION 28	28	5.812
SECTION 29	29	5.812
SECTION 30	30	5.812
SECTION 31	31	5.812
SECTION 32	32	5.812
SECTION 33	33	5.812
SECTION 34	34	5.812
SECTION 35	35	5.812
SECTION 36	36	5.812
SECTION 37	37	5.812
SECTION 38	38	5.812
SECTION 39	39	5.812
SECTION 40	40	5.812



Legend

- Milepost
- Open Road
- Trail
- Closed Road
- Powerline
- ▭ Reservation Boundary
- Road Block
- ▨ Salvage Decks OPEN to cut
- Main Road
- NO CUT Area
- ▭ Free Use and Resale

0 0.5 1 2 Miles

This map is for display purposes only. Date: Nov. 17, 2020. 1:20 PM. 913-330-3300

NOTE: All salvage fire wood cutting is open in all Free Use and Resale areas.

