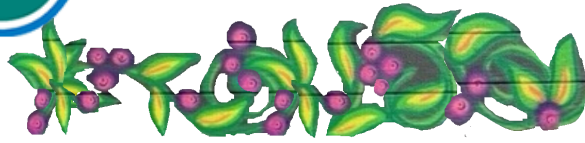




MT. HOOD

MEADOWS



2025 WARM SPRINGS HUCKLEBERRY TRIP

THURSDAY AUGUST 7, 2025

Schedule

- 9:00am** Bus departs from the Warm Springs Community Center
- 10:00am** Arrival at Sahale Lodge (folks driving themselves should meet at Sahale Lodge, located in the main base area) Check in for the day.
- 10:00am** Stadium chairlift rides begin (ends at 5:00pm)
- 10:15am** Shuttle bus departs to Hood River Meadows to huckleberry areas.
- 11:45am** Shuttle Bus departure from picking areas (Hood River Meadows and back to Sahale Lodge for lunch
- 12:00pm** Prayer and lunch
- 1:00pm** Shuttle bus to returns to Hood River Meadows area for more picking.
- 3:30pm** Shuttle bus departure from picking areas back to Sahale Lodge for departure back to Warm Springs.
- 4:00pm** Bus departs from Sahale Lodge back to Warm Springs.

- **BE SURE TO BRING A HAT AND WEAR GOOD WALKING SHOES**
- **Spring water from Mt. Hood is available so please bring a container.**
- **Don't forget your basket or container for your berries**

Please note:

- **Children younger than 2.5 years old (30 months) must be in a front facing carrier to ride the lift.**
- **No dogs or other animals on the lift, for safety reasons. This includes service animals.**
- **In the summer dogs are allowed anywhere in the base area, decks and on trails if they are on a leash. Dogs are not allowed in any of the lodges, except for service animals. For guests that bring their dog with them to the mountain, Meadows provides a dog park on the north side of the main parking lot. Please always clean up after your dog.**

If you have questions – text 541-460-2255.